

inside

interior design review

SEPTEMBER/NOVEMBER 2019

australiandesignreview.com

107

# inside

interior design review

## idea. 2019 shortlisted

ISSUE #107 | CELEBRATING 22 YEARS OF REVIEWING INTERIOR DESIGN



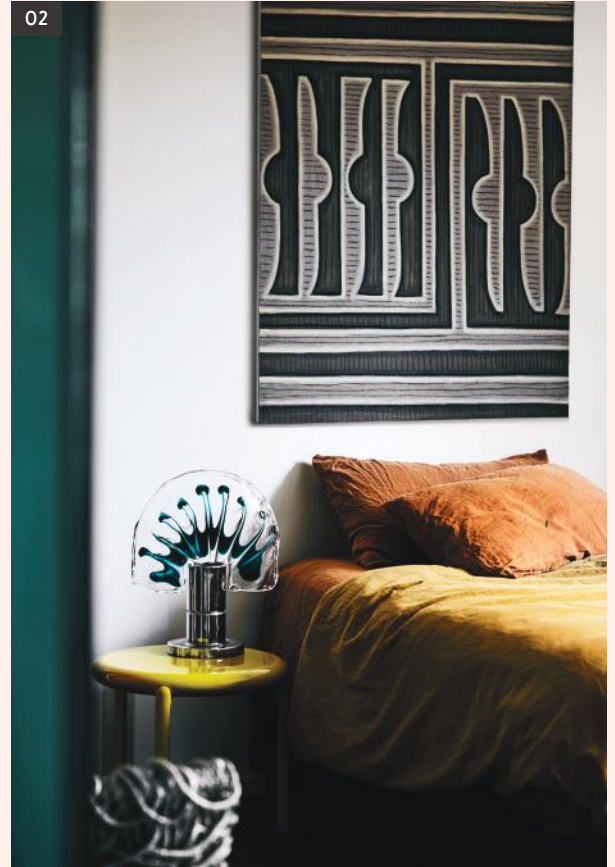


# Designer of the Year

Again, the entries submitted to IDEA 2019 were outstanding in every aspect and the six practices showcased here for the Designer of the Year award each presented an exceptional body of work. Congratulations to those who have been nominated. Your talent, creativity and innovation place you at the apex of your profession and we applaud you all.



**01 Alexander & CO.**  
D — Imperial Hotel  
P — Anson Smart



**02 Flack Studio**  
D — The Ivanhoe residence  
P — Sharyn Cairns, Caitlin Mills



**03 Arent&Pyke**  
D — Villa Amor  
P — Anson Smart



04 Kate Challis Interiors  
D — Fitzroy residence  
P — Sharyn Cairns



05 Kennedy Nolan  
D — Sandy Bay house  
P — Derek Swatwell



06 Mim Design  
D — Nineteen at The Star  
P — Sean Fennessy



# Emerging Designer

2019 Shortlist

idea.



**Adam Kane Architects**  
Established 2015



**Bruce Henderson Interiors**  
Established 2018



**Endrim Consulting**  
Established 2017



**Adele McNab Architecture**  
Established 2018



**Carole Whiting Interiors and Design**  
Established 2016



**INK interior architects**  
Established 2014



**Arcadia Design Studio**  
Established 2016



**Dean Dyson Architects**  
Established 2017



**Kate Challis Interiors**  
Established 2015

# Residential Decoration

2019 Shortlist

idea.







**01 Armadale III**

D — Simone Haag and Workroom  
P — Derek Swalwell

An eclectic array of furniture pieces complements the raw architectural expression, resulting in a home of luxury and layers. Fringed ottomans, studded stools, herringbone marble tables, clashes of pattern and texture. The pieces are dynamic, liveable and married to the design.

**2 Art Deco residence**

D — Kate Challis Interiors  
P — Sharyn Cairns

Celebrating Chinese culture while functioning as a modern home for a family with young children, the Brighton house merges traditional Chinese forms, shapes, techniques, materials and influences with contemporary elements to create a vibrant family residence.

**03 Art house**

D — STUDIO CD Design  
P — Anson Smart

This is a theatrical family home, where curated rooms of contemporary forms sit harmoniously within the architectural foundations. Dramatic murals, sculptural lighting, textured fabrics and bursts of colour against muted tones represent the young family in its grand inner city setting.

**04 Casa Atrio**

D — Biasol  
P — Derek Swalwell

The plant-filled atrium brings life, light and connection into the heart of this family home. With the character of an Italianate-style terrace, the interior is spacious, light-filled and has the charm of a classic Parisian apartment with elegant detailing, custom furniture and spaces to gather.

**05 Cove house**

D — Brendan Wong Design  
P — Maree Homer

Decorated with rich, textural layers of contemporary comfort and with added treasures of period significance, the interior is an aesthetic journey of brave yet authentic materials, and extends innovation to the finest interior details in reimagining the spirit of the original 1960s architecture.

**06 Hatherlie**

D — Simone Haag and Andrew Simpson Architects  
P — Shannon McGrath

Maintaining the formality of the original Victorian terrace, while leading into the darkness of these rooms with a moody palette of rich tones, the scheme is moody and sophisticated, yet pared back for clients that prefer their living spaces to be not overly decorated.

**07 Fitzroy residence**

D — Kate Challis Interiors  
P — Sharyn Cairns

The Gertrude Street project is an unapologetically creative family home that blurs the distinction between art and design. This personable family home is a celebration of creative collaboration, inspired by the immersive interiors of grand historic European homes.

**08 Holly penthouse**

D — Simone Haag, Bec van der Slys and Tom Robertson Architects  
P — Derek Swalwell

The clean lines of this project are softened with the curves of objects, furniture, bespoke furniture and artworks, each complementing the monochrome palette with touches of brass, leather and velvet, which adds texture and warmth towards an effectively homelike environment in this penthouse.

## Residential Single

### 12 Darling Point

D — Alexander & CO.  
P — Tom Ferguson

Articulated through a contemporary floorplan, the alteration of and addition to this Victorian cottage in Darling Point, Sydney, pays homage to a traditional grand home. All surfaces have been deliberately hand-detailed and finished, from polished plaster and painted tidelines to ceiling lining boards and contemporary wall panelling.

### 13 Darlinghurst terrace

D — Tom Mark Henry  
P — Pablo Veiga

Filled with minimalist design and pared back to its original features, this Heritage terrace has been injected with contemporary details. A clear line upon entry, with a view from the front door through to the kitchen and dining space, continues seamlessly into the sun-drenched courtyard.

### 14 Deco residence

D — FMD Architects  
P — Fraser Marsden, Tatjana Plitt

Comprising a series of striking and sculptural elements inserted into the opulent period spaces of a 1930s Art Deco estate in Melbourne's leafy south-east, these additions delicately touch the original, offering counterbalance and subtle conversation with the generous volumes and rich tones of the original house.

### 15 Dunes

D — Whiting Architects and Calamity Jane  
P — Derek Swalwell

Set among the sand dunes on Victoria's Mornington Peninsula, the new works include a second-level addition, master bedroom, en suite and retreat to take in 180-degree ocean views. A major renovation created cloistered outdoor spaces for entertaining, and a sheltered and extensive vegetable garden.

### 16 Elemental house

D — Ben Callery Architects  
P — Dave Kulesza, Jack Lovel

This completely self-sufficient outback retreat posits an architectural expression of adventure, freedom and minimalism that is synonymous with going 'off-grid'. The form boldly responds to its environment and the palette of materials reflects the quiet rawness of the site and a minimalist penchant.

### 17 Fitzroy residence

D — Kate Challis Interiors and Ridolfi Architecture  
P — Sharyn Cairns

At 3.9 metres at its widest, this residence on a busy retail strip was originally built in 1892 as a shop. Today the building delights as an inner city family home and a seductive sanctuary, honouring a radical past by retaining a distinctly individualistic spirit throughout.

### 18 Garden Bunkie

D — Reddog Architects  
P — Christopher Frederick Jones

The Garden Bunkie is part of the tiny home movement and growing trend for a stand-alone dwelling with enhanced design and lifestyle aspirations. This compact detached dwelling is carefully sited around established trees. The simple, robust exterior of the Garden Bunkie belies its delicate, light filled interior.

### 19 Garden Wall house

D — MAKE Architecture  
P — Sean Fennessy

With no room to spare in this 4.5-metre wide site, ruthless paring back has reduced the scheme to two white brick garden walls, running uninterrupted at a constant height from interior space to garden extent with a singular dark brick form balancing gently above. Skylights amplify the light-filled spaciousness.

### 20 GB house, Sydney

D — Renato D'Ettorre Architects  
P — Justin Alexander

Responding to the magical site overlooking Gordons Bay, this house embodies the spirit of seaside living in a design that is discreet in scale, has a quiet focus and layered materiality, and is sensitive to site and neighbours, providing mystery and privacy along one of Sydney's busiest coastlines.

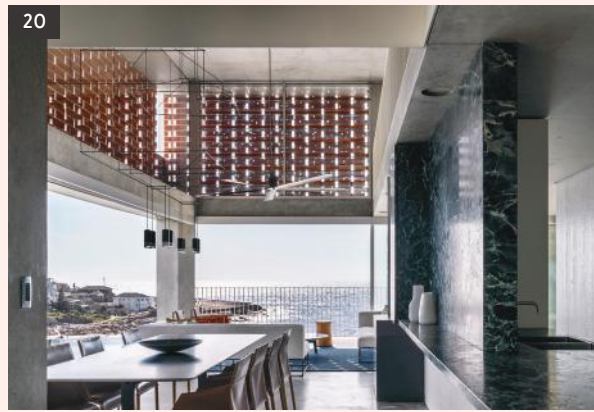
### 21 Hatherlie

D — Andrew Simpson Architects  
P — Shannon McGrath

The additions to this 19th century terrace house of individual Heritage significance include new living, kitchen, meals, laundry and study areas, while the front portion has been fully restored. The built internal and external interventions incorporate a formal geometry that creates varied horizontal and vertical spatial experiences.







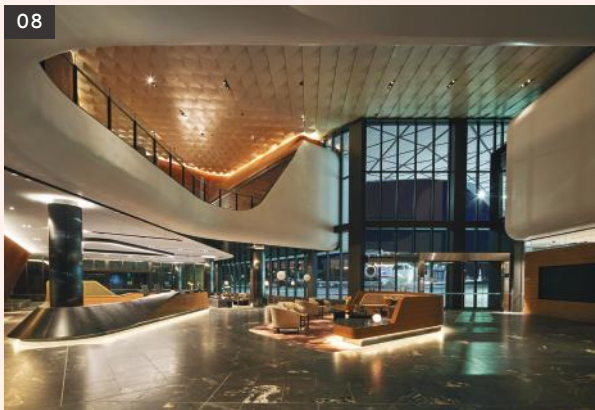


# Colour

2019 Shortlist

idea.





**01 Attic Magic**

D — Windust Architecture x Interiors  
P — Eve Wilson

This project honours a child's imagination with a joyful roof space renovation atop a Melbourne Heritage home. Sparking delight with colour and form, it celebrates the minds of the two children, while reimagining the humble attic as a dreamscape in the clouds.

**02 Art Deco residence**

D — Kate Challis Interiors  
P — Sharyn Cairns

Celebrating Chinese culture while functioning as a modern home for a family with young children, this Brighton house merges traditional Chinese forms, shapes, techniques, materials and influences with contemporary elements to create a vibrant family residence.

**03 C.C. Babcoq**

D — Tom Mark Henry  
P — Damian Bennett

A fun and quirky fitout for a rotisserie, carvery and cocktail bar in Cronulla. The sassy and bold namesake C.C. Babcock from *The Nanny* was adopted as a personality for the interiors, with a fusion of a coastal influences to reference the beachside location.

**04 Fitzroy residence**

D — Kate Challis Interiors  
P — Sharyn Cairns

The Gertrude Street project is an unapologetically creative family home that blurs the distinction between art and design. This personable family home is a celebration of creative collaboration, inspired by the immersive interiors of grand historic European homes.

**05 Imperial Hotel**

D — Alexander & CO.  
P — Anson Smart

Relaunching one of Australia's most revered LGBTIQ+ safe havens, the design reimagines this cultural icon as a 'Lost Palace' as it continues to play a pivotal role in the greater Sydney community, while also providing an inclusive cabaret and entertainment space.

**06 Imperial Up**

D — Alexander & CO.  
P — Anson Smart

Conceived as an 'Arts Social Club', Imperial Up is a public salon referencing Studio 54 and the memories of Andy Warhol. Located on the upper level of Sydney's iconic Imperial Hotel, it includes a 30-seat diner, cocktail bar, private dining room, lounge/dining area and exterior bar with pizzeria.

**07 Manteau Noir**

D — Carole Whiting Interiors and Design  
P — Danny Wootton

Working within strict design parameters, the design links the dedicated annex to the larger retail store. Maintaining the personality of the broader business while creating a strong retail landscape, the deep inky blue element sets the tone and envelops the visitor.

**08 Melbourne Jet Base**

D — Cox Architecture  
P — Peter Clarke

A unique facility dedicated to the specific needs of high-end travellers – including exclusive business amenities, curated dining, lounges and private suites – the project establishes an international benchmark for the airline industry and new gateway for Victoria and beyond.

**09 Microsoft Technology Centre**

D — Tom Mark Henry  
P — Damian Bennett

Microsoft's first Flagship Technology Centre in Australia, the 1680-square metre space is located above the iconic GPO in Sydney's bustling Martin Place. The multipurpose space incorporate conference spaces, produce display areas and staff touchdown zones.